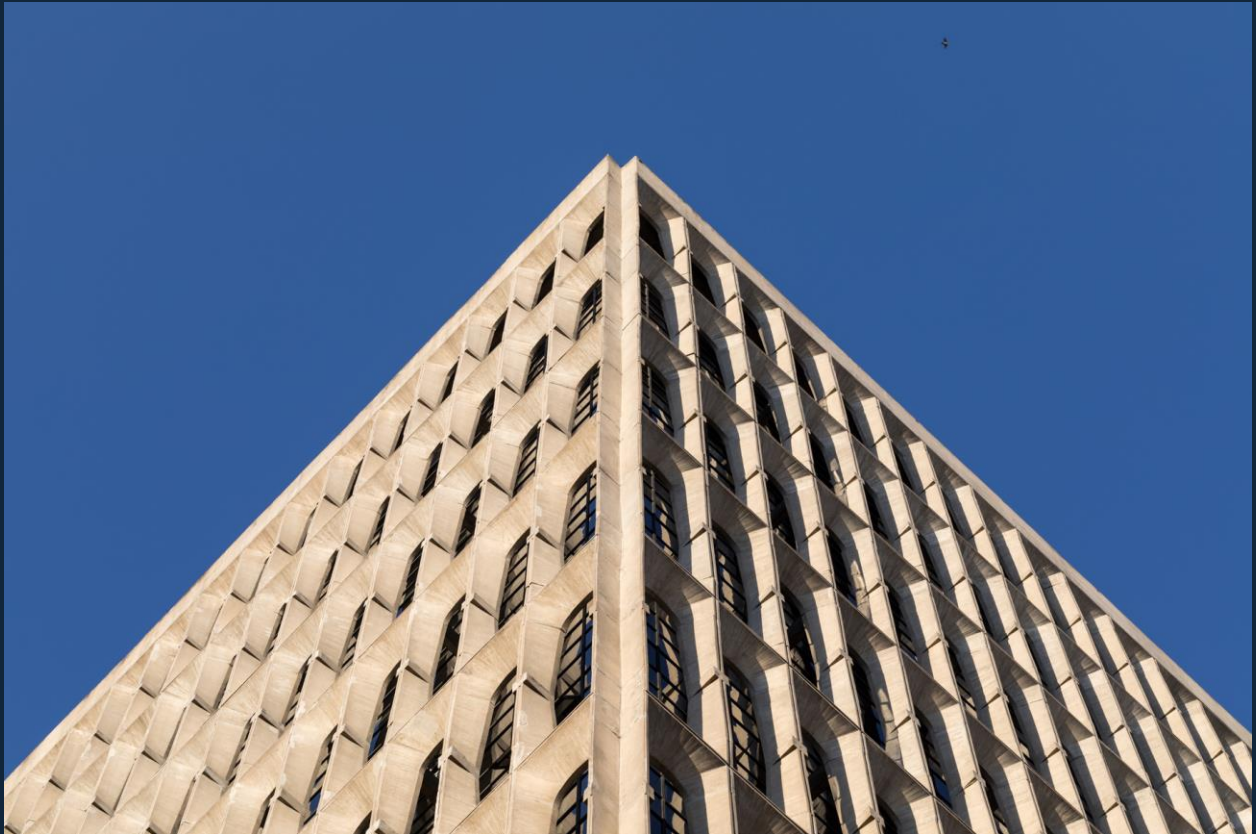




# STAY IN THE MOMENT



**TIVOLI**  
MOFARREJ  
SÃO PAULO HOTEL

[tivolihotels.com](http://tivolihotels.com)



# WELCOME TO TIVOLI MOFARREJ

With a prime location, Tivoli Mofarrej São Paulo is located in Jardins, one of the best neighborhoods in São Paulo. With a design signed by architect Patrícia Anastassiadis, the hotel combines sophistication and comfort.

Whether for leisure or business purposes, when in need to escape the city buzz, treat yourself to relaxing massages at Anantara Spa, prestigious Thai chain, or embark on the world of gastronomy in one of our two international restaurants.

At Tivoli Mofarrej São Paulo, life takes on superlative refinement and sophistication, especially designed to all those willing to live a unique experience.

## LOCATION

Located in the best neighborhood of São Paulo, Jardins, on Alameda Santos.

It is situated near the most elegant stores on Oscar Freire Street and is less than a block away from Brazil's largest financial center – Avenida Paulista. It is located about 28 km from Guarulhos Airport and 9 km from the Congonhas Airport. Access to public transport just a few meters away.

## ACOMODATIONS

### **218 apartments, including:**

- 01** Presidential Suite (1 Executive Suite Garden View + 2 Deluxe Suite Garden View)
- 01** Park Suite (1 Deluxe Suite Garden View + 1 Deluxe Plus Twin)
- 04** Executive Suite Garden View
- 31** Deluxe Suite Garden View
- 56** Deluxe Plus Room
- 12** Deluxe Plus Room City View
- 29** Deluxe Plus Twin Room
- 6** Deluxe Plus Twin Room City View
- 72** Deluxe Room (8 apartments specially adapted for guests with reduced mobility)
- 6** Deluxe Room City View
- Deluxe Family Room:** package with 1 Deluxe Room + 1 Deluxe Plus Twin Room

---

## PRESIDENTIAL SUITE

Located on the 22nd floor of the hotel, with a panoramic view of the best of São Paulo and floor-to-ceiling windows, the new Presidential Suite brings a unique concept, innovative, and inviting, without any loss of tradition and sophistication. With its mind-blowing 750 m<sup>2</sup>, the Latin America's largest presidential suite reveals splendid rooms, kitchen, office, dining room, living room, three bedrooms, and two bathrooms.

After its renovation, the master bedroom features a large, unique, integrated, and brightly lit room overlooking the Trianon Park. In addition, it has a bathroom with a spacious hot tub, double rain shower, and sauna.

With daily rates that give access not only to excellent accommodations, but also a premium treatment, guests of the presidential suite are entitled to concierge and butler services.



## PARK SUITE

Boasting the exclusive view of Alexandre Gusmão Square and Trianon Park, the Park Suite offers an elegant, sophisticated, and contemporary atmosphere. Designed in 200m<sup>2</sup>, the Suite is divided into three distinct environments: the Deluxe Suite Garden View, the Deluxe Plus Twin Room, and a living area with living room, TV room with home theater, office with library, dining room, wine cellar, among other details that make this suite a perfect balance between luxury, comfort, and functionality. The suite also offers a first-rate butler service, special amenities, WiFi system, including minibar and other exclusive services that round off the experience.



---

## EXECUTIVE SUITE GARDEN VIEW

With 75m<sup>2</sup>, the Executive Suite Garden View, decorated with exclusive design, includes a bedroom with King Size bed and closet, living room with sofa and armchairs, and meeting/dining room for 6 people. The large bathroom is equipped with a Victorian bathtub and shower unit. These suites offer stunning views of Trianon Park and Avenida 9 de Julho.



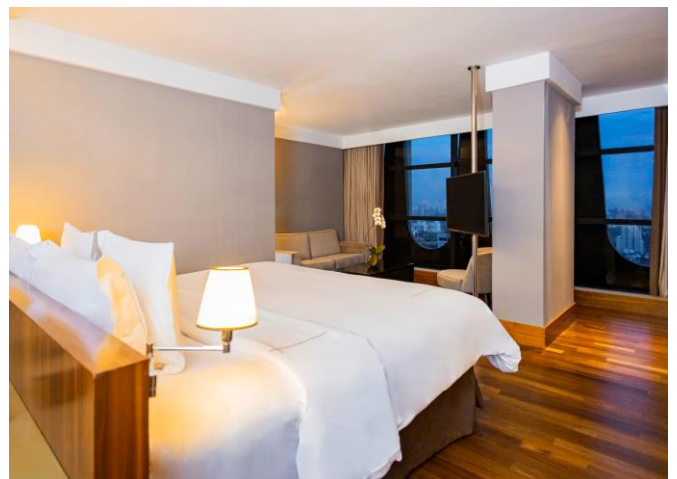
## DELUXE SUITE GARDEN VIEW

The Deluxe Suite Garden View offers an area of 45m<sup>2</sup> and consists of two common spaces, with living room and bedroom. This room with breathtaking views of Trianon Park is furnished with a sofa, armchairs, and a closet. The large bathroom is equipped with a bathtub separate from the shower.



## DELUXE PLUS ROOM CITY VIEW

With an incredible view of the city of São Paulo, the Deluxe Plus City View (38 m<sup>2</sup>) features a King Size bed or two Twin beds, as well as a comfortable work area. The large living room is furnished with armchair, sofa, and coffee table. The bathroom has separate shower boxes. Apartment located between the 16th and 21st floors.



---

## DELUXE PLUS ROOM

The Deluxe Plus, measuring 38 m<sup>2</sup>, has a King Size or Twin bed and a comfortable work area. The large living room is furnished with armchair, sofa, and coffee table. The bathrooms have a separate shower box.



## DELUXE ROOM CITY VIEW

With a picturesque view of the city of São Paulo, the 29 m<sup>2</sup> Deluxe City View includes a seating area and a common living area. Furnished with Queen or King size bed, armchair, and a table with coffee machine. Apartment located between the 16th and 21st floors.



## DELUXE ROOM

The Deluxe Room, with 29m<sup>2</sup>, includes a seating area and a common living area. Furnished with Queen or King size bed, armchair and a table with coffee machine.



---

## HOTEL SERVICES

- 24-hour Room Service
- Valet Parking
- Laundry Service
- Private Helideck
- *Guest Relations*
- Daily Executive Ironing Service
- T/shoe Shine
- Luggage packing at the beginning and end of the stay upon request
- Private Concierge (7 a.m. to 11 p.m.)
- Supply of newspapers upon request
- Kit available for children
- Kit available for pets

## LEISURE SERVICES

- Anantara Spa
- *Fitness Center*
- Outdoor Swimming Pool
- SEEN Restaurant & Bar
- Must Restaurant

## ANANTARA SPA

Anantara Spa offers a journey to wellness that harmonizes health and beauty.

Our treatments bring boundless holistic benefits through a fusion of Thai and Brazilian traditions. Disconnect from the outside world and take refuge in this sanctuary for the senses.

At Anantara Spa the best journeys are not said, they are felt.

The Anantara Spa is open Monday to Saturday from 10 a.m. to 9 p.m., Sundays and holidays: from 10 a.m. to 7 p.m



# RESTAURANTS

---

## SEEN Restaurant & Bar

With a 360-degree central bar and views of the wonderful São Paulo skyline, SEEN fires up São Paulo nights.

The restaurant is signed by French-Portuguese chefprenneur Olivier da Costa who garners a 20-year career in Europe. The varied cuisine is under the command of Chef Gisely Rocha, and the drinks are prepared by bartender Heitor Marin.

Another attraction is the sushi bar run by chef Fernando Sant'anna, accompanied by an exclusive sake menu.

SEEN is open Monday to Saturday from 7 p.m. to 1 a.m.



## MUST RESTAURANT

Inspired by the urban lifestyle of cosmopolitan cities that are world icons, such as New York, Tokyo, and the city of São Paulo itself, Tivoli Mofarrej São Paulo reopens Must Restaurant with a new menu that revisits the best of the author's cuisine of Danilo Brasil, the hotel's executive chef, and a menu of craft drinks made with the advice of bartender Adriana Pino, Brazilian champion of World Class 2018, the world's largest cocktail championship.

In an environment that is both trendy and exclusive, Must Restaurant resurfaces as an elegant, modern, and cozy space amid the hustle and bustle of the capital. Crossing the famous glass ceiling of the restaurant, the visitor will be facing the city's coolest pool, which is now decorated by designer Amir Slama.

Must is open every day from 8 a.m. to 1 p.m.





# GROUPS & EVENTS

With 13 rooms and a total area of 2,925m<sup>2</sup>, the event venue offers state-of-the-art audiovisual equipment and lighting, as well as accessibility in all rooms. With areas measuring between 29m<sup>2</sup> and 615m<sup>2</sup>, it has a maximum capacity of 1,600 simultaneous people.



## SUMMARY OF EVENTS ROOM

VENUES	Dimensions x Ceiling Height	Auditorium	U shape (4 per table)	School shape (4 per table)	Half-moon shape (7 per table)	Cocktail	Buffet (10 per table)	American service (10 per table)
Jardins AB Room	615 m <sup>2</sup> x 3.36 m	600	-	330	245	650	360	380
Jardins A Room	423 m <sup>2</sup> (29.20 x 14.50) x 3.36 m	450	92	216	154	450	270	290
Jardins B Room	192 m <sup>2</sup> (16.00 x 12.00) x 3.36 m	150	48	112	84	200	120	150
Jardins Foyer	563 m <sup>2</sup> (23.50 x 22.25) x 3.10 m	200	-	-	-	350	300	350
Itaim Room	253 m <sup>2</sup> (14.00 x 12.40) x 2.40 m	220	44	156	84	250	150	170
Liberdade Room	277 m <sup>2</sup> (17.20 x 14.00) x 2.60 m	250	44	176	98	300	150	180
Ipiranga Room	110 m <sup>2</sup> (10.30 x 11.10) x 2.06 m	80	32	64	42	60	50	60
Pinheiros AB Room	80 m <sup>2</sup> (12.70 x 6.40) x 2.23 m	40	28	40	28	50	40	60
Pinheiros A Room	40 m <sup>2</sup> (6.35 x 6.40) x 2.23 m	20	12	16	7	20	10	16
Pinheiros B Room	40 m <sup>2</sup> (6.35 x 6.40) x 2.23 m	20	12	16	7	20	10	16
Paraíso Room	28.6 m <sup>2</sup> (4.55 x 6.40) x 2.23 m	Single table for 10 people						
Paulista Room	28.2 m <sup>2</sup> (4.70 x 6.00) x 2.20 m	18	12	12	7	10	20	20
Bela Vista Room	253 m <sup>2</sup> (17.80 x 14.20) x 3.60 m	220	56	140	112	250	200	220
Tivoli Bistrô Restaurant	348 m <sup>2</sup> x 2.48 m	90	28	-	-	200	150/180	180/200
Seen Restaurant	-	-	-	-	-	180	140	160
Presidential Suite	~220 m (room only)	-	-	-	-	80	40	40

# SUPPORT INFRASTRUCTURE

- 13 technologically equipped rooms
- Reception for groups
- Conference area and Foyer with natural light, gardens, and water fountain

# AVAILABLE SERVICES

- Wi-Fi internet in public areas, meeting rooms, and bedrooms
- Free access to the Business Center



# HOTEL POLICIES

## ARRIVAL TIME

Check-in from 3 p.m.

## EXIT TIME

Check-out: By 12 p.m.

## CREDIT CARD

Tivoli Mofarrej São Paulo accepts the following credit cards:  
American Express, Visa, Mastercard, Dinners, JCB, and Elo.

## GUARANTEE & CONFIRMATION OF RESERVE

Credit card is required as a guarantee or advance deposit in the total amount of the stay.

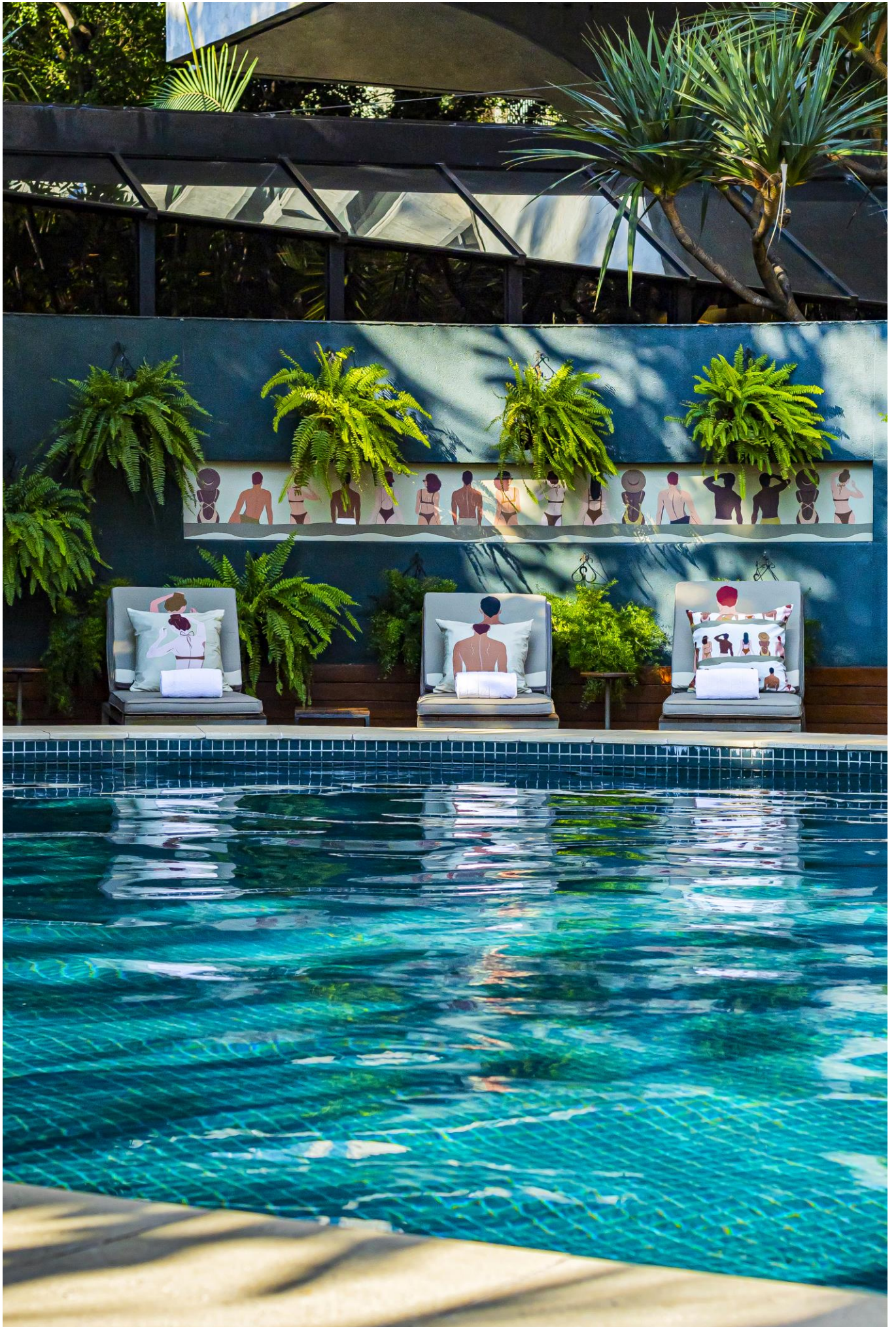
## CANCELLATION POLICY

For cancellations between 48 hours before check-in and no-shows,  
the reservation is subject to a one-night penalty charge to the credit card provided.

## POLICY FOR CHILDREN

Free accommodation for children up to 2 years old.







**TIVOLI**  
MOFARREJ  
SÃO PAULO HOTEL

Tivoli Mofarrej São Paulo  
Alameda Santos, 1.437  
T: +55 11 3146 5900  
E: [reservations.tspm@tivolihotels.com](mailto:reservations.tspm@tivolihotels.com)  
[www.tivolihotels.com](http://www.tivolihotels.com)  
[@tivolimofarrej](https://www.instagram.com/tivolimofarrej)